

Preparing images for PDI competitions – Adobe Elements 9

Updated for September 2017

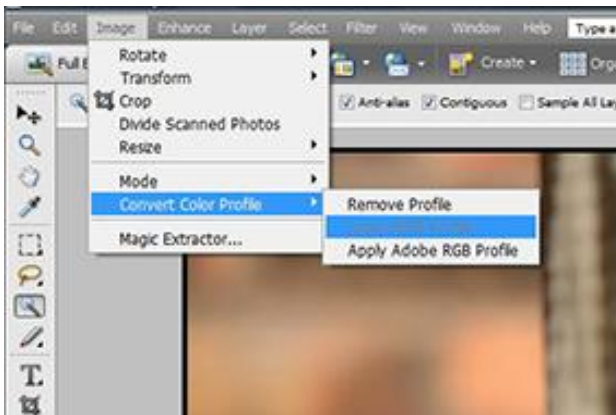
The PAGB and some others have changed the required size for their competitions to 1600 pixels wide by 1200 pixels high at 96ppi. The colourspace to be used has remained at sRGB, NOT Adobe RGB or Prophoto RGB or anything else. If you use the 'wrong' colourspace then the saturation and tones displayed in your images might not match what you saw on a computer.

For the moment if you want to still use 1400 pixels wide by 1050 pixels high for internal club competitions, that is OK. The details below will still work but where they say 1600 use 1400 and instead of 1200 use 1050 pixels.

These screenshots were done using Elements 9, I do not know if Adobe have changed the location of options in newer versions.

Setting the sRGB colour profile

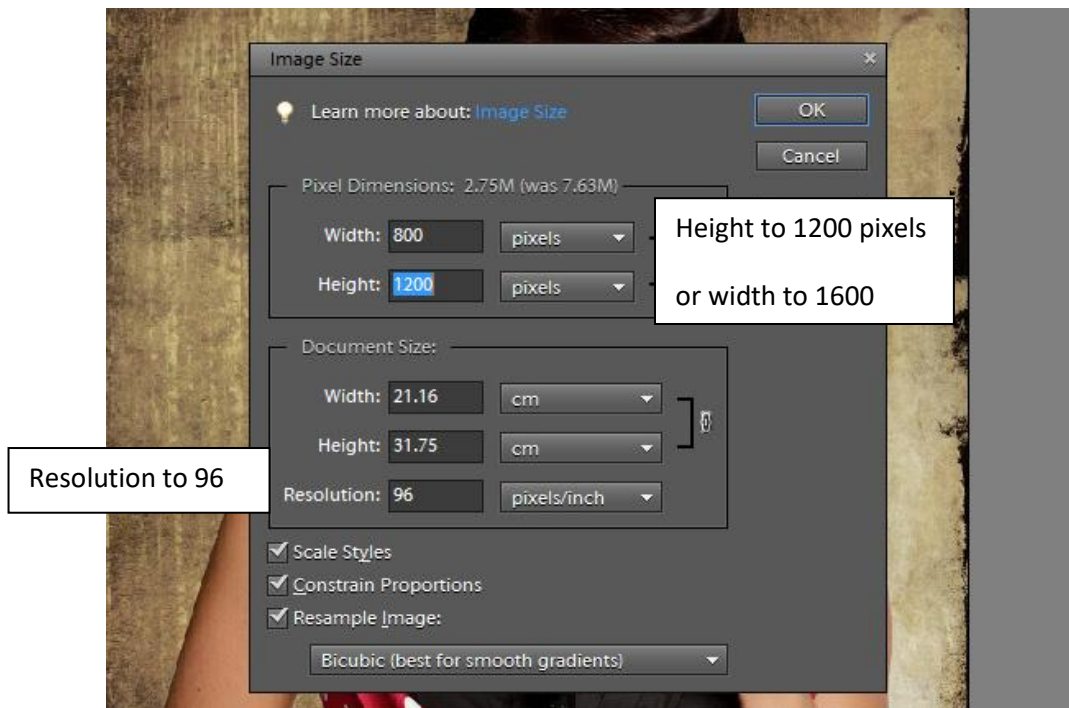
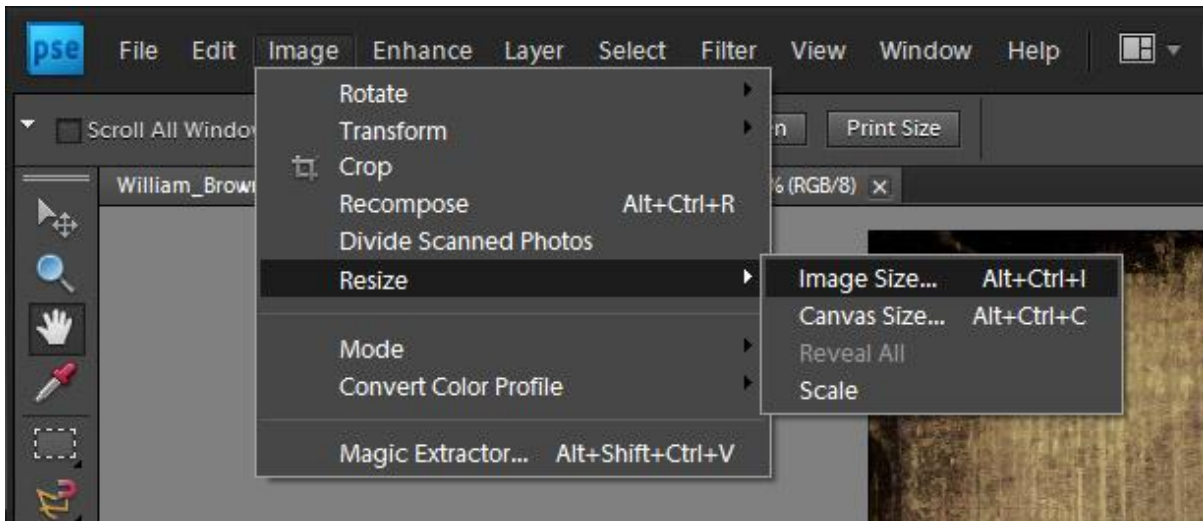
Image – Convert colour Profile – sRGB profile



(Elements 5 screenshot)

Image resizing

Image - Resize - Image size



First set the measurement option to 'pixels' and the resolution to 96 ppi. Make sure that 'Constrain proportions' and 'Resample image' are ticked.

Then:

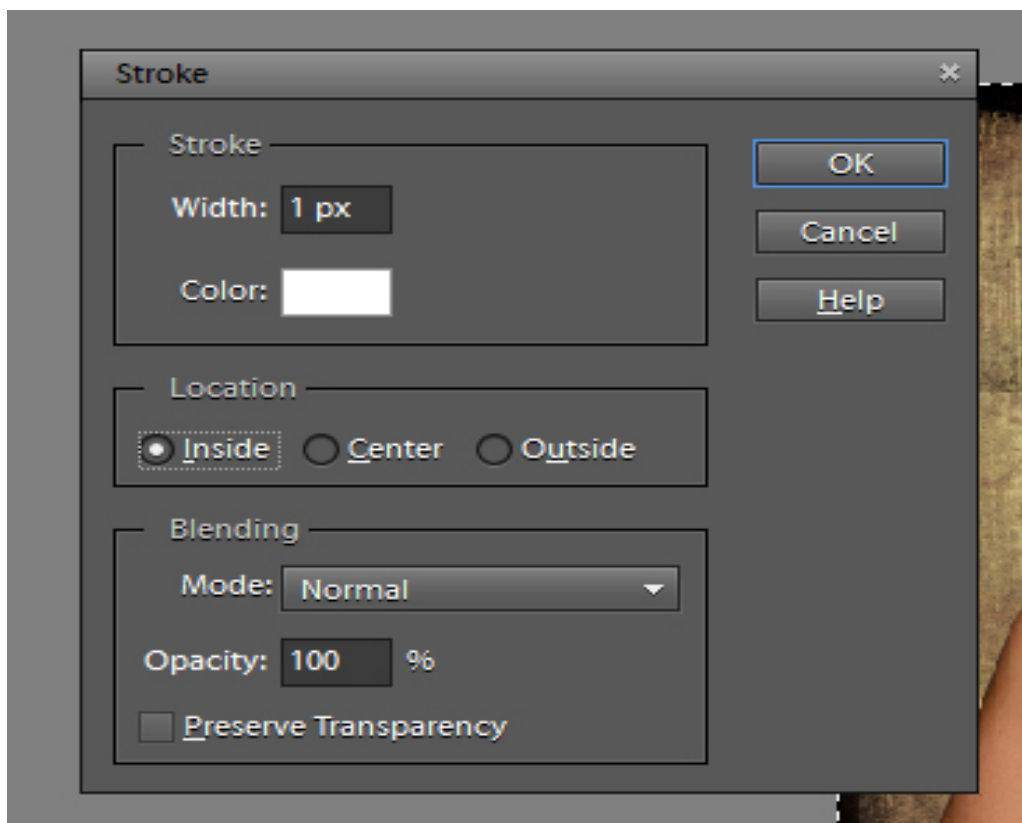
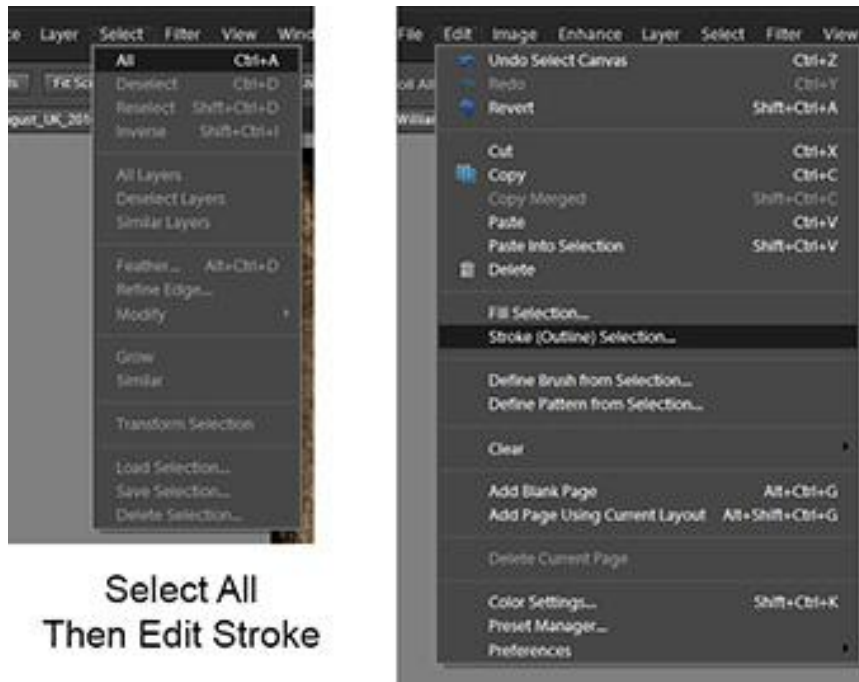
- for 'landscape' orientation images set the **length to 1600 pixels**
- for 'portrait' orientation images set the **height to 1200 pixels**
- for **square** images set the **height to 1200 pixels**

The closer a 'landscape' orientation image is to being a square, the more likely it is that a 'landscape' orientation image will need to be set to a height of 1200 pixels as opposed to a width of 1600 pixels.

There are a variety of sampling options when resizing. Generally the 'Bicubic sharper (best for reduction)' option will be the better option.

Adding a white border line to the image

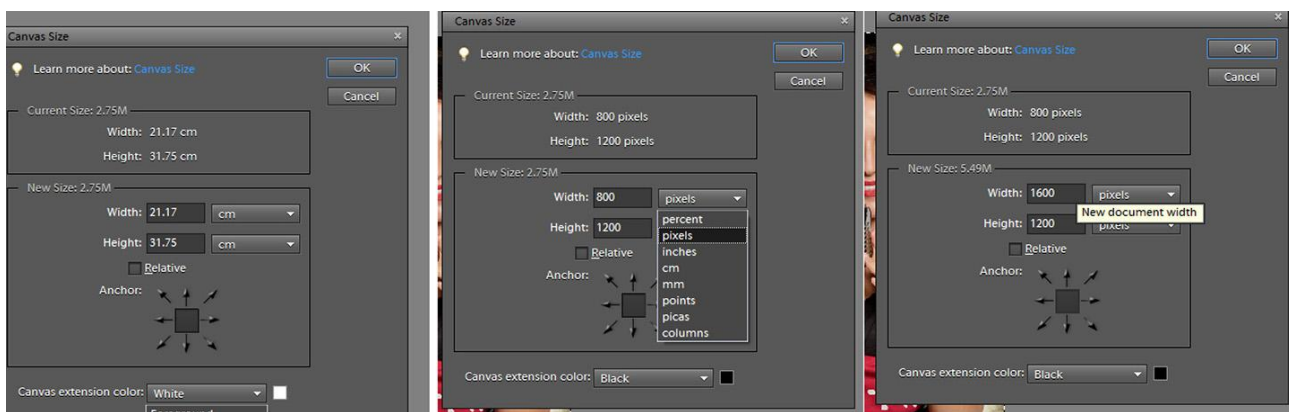
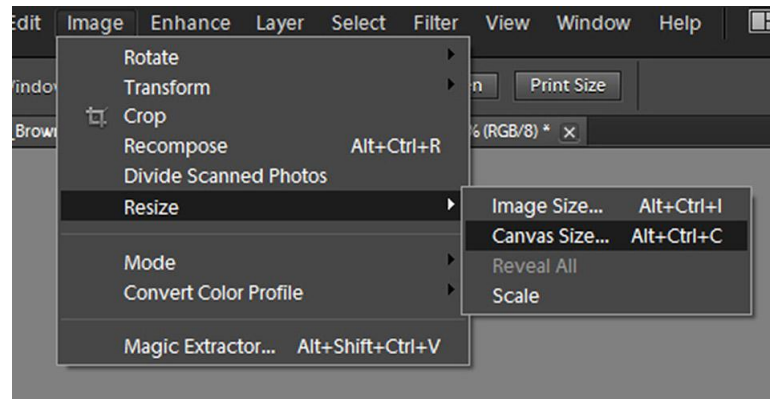
Some images benefit from a thin white line to 'frame' the image.



Any wider than 2 pixels and it might draw a negative comment from the judge. Some images will suit a different, more image appropriate colour for this than white.

Changing the canvas size

Image - Resize - Canvas size



If the image size is shorter than 1200 pixels high or less than 1600 pixels wide then the canvas size can be changed to make the final image the correct size.

Set the units to pixels, not the default inches or centimetres.

Set the canvas extension to black (Can be white or another colour if you really want to !)

Then set the pixel dimensions for the canvas to Width 1600 and height 1200.

Saving the file

Save as a JPEG file, 'Baseline (Standard)' encoding and in 'highest quality'. File size is often set at a maximum of 2mb. Make sure that the file name is the same as the name you put on the entry form.

If you find any errors in this, please let me know.

William Brown